

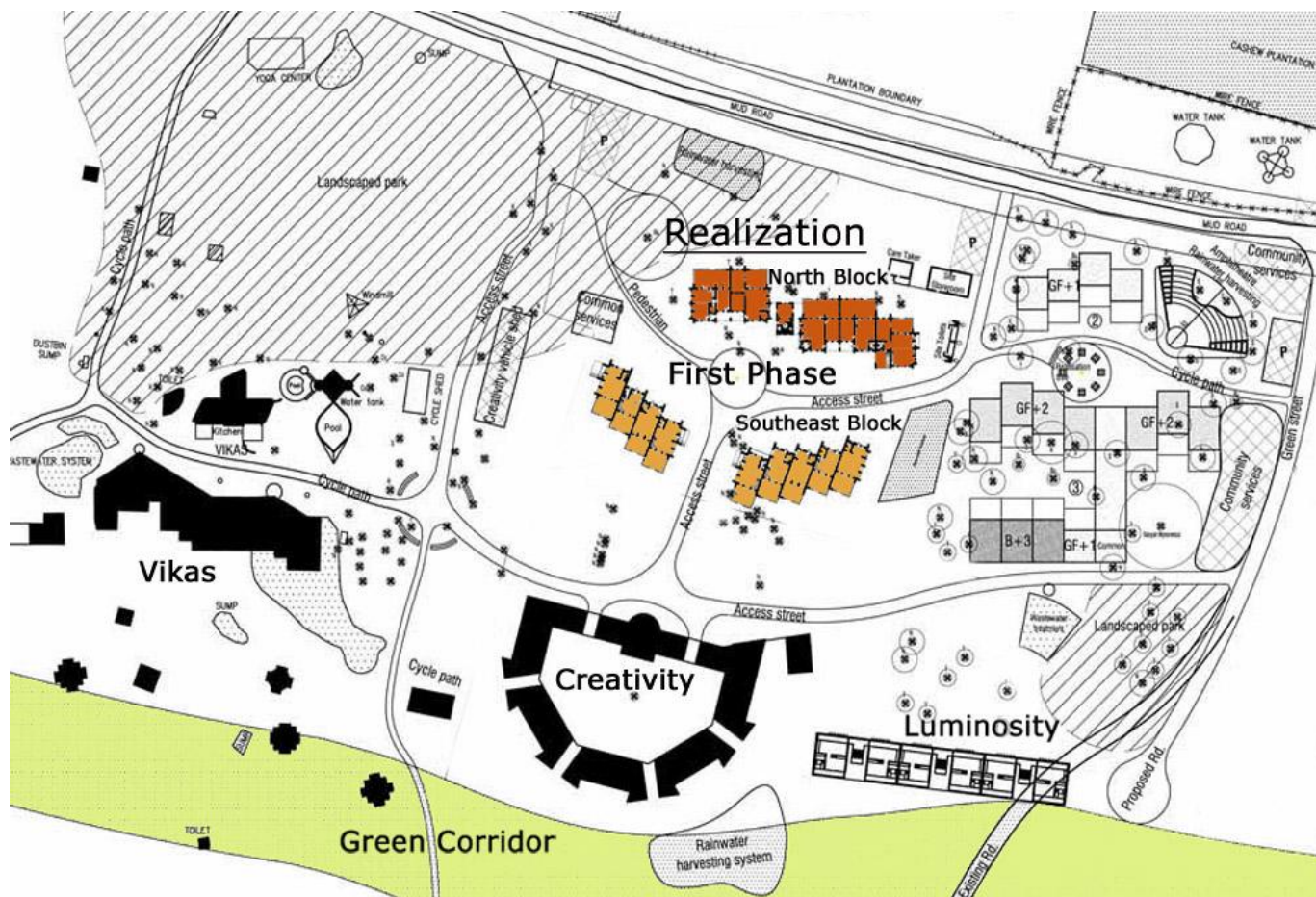
# Housing Project: **Realization Community** First Phase

Project Holder: Satprem Maïni and Christian Mabilat

Architect: Satprem Maïni

Contractor: Auroville Earth Institute

Site: Residential Zone, Sector 2



*Site Plan*

At the end of July, all five residents moved into their respective units in the completed Southeast Block of the Realization Community.



*Perspective rendering of Southeast- (left) and Southwest Block*

Construction on the North Block began in April 2010 and we will begin the vaults and domes of the ground floor by end of August. The entire North Block is estimated for completion by September 2011. The Southwest block is still in the design development phase and is proposed to begin construction by January 2011, providing that ample labor can be obtained.



*North Block under construction*

Realization is a housing project dedicated to building sustainable and affordable homes for Auroville and aspires to contribute actively to the development of Auroville as a conscious community and as a city of never-ending education. Hence, through the use of compressed earth blocks, rammed earth, and the implementation of rainwater harvesting, waste water treatment facilities and an earth tunnel cooling system, we can provide an economical and sustainable community, while providing a sense of home.

There are a total of 16 apartments in the whole project – six studio units, three one-bedroom units, and seven two-bedroom units. Common parking areas on the site and near the buildings are

provided with access for electrical vehicles, and a common gathering area in the center of the site will offer a place for residents to meet. A common terrace linking the East and West portions of the North Block will contain a roof garden, which can be used by the residents for planting and outdoor enjoyment.



*Perspective rendering of North- and South Blocks*

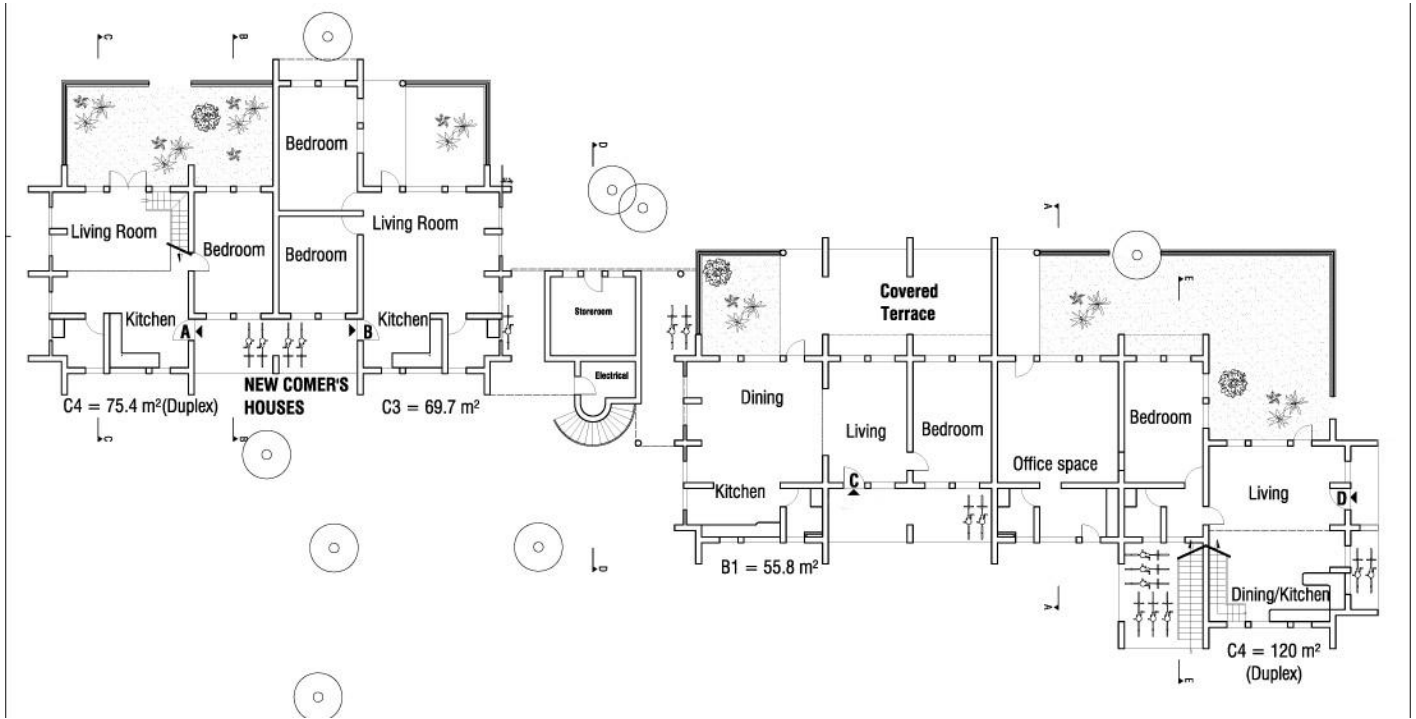


**NORTH ELEVATION**



**SOUTH ELEVATION**

*Elevations of North Block*



*Ground-floor Plan North Block*