

Housing Project : **Arati III** Building 1 and 2

Design, Services & Landscaping: Shama Dalvi

Structural: Tamizarasan (Pondicherry), Kannan (Chennai)

Waste water treatment system: Dirk Nagelschmidt

Contracting teams:

Civil: Aurovikas constructions (Parasuraman) , Narasingam, Iyanar

Painting: Carlos (Auroville)

Metal works: Kumaravel (Kottakarai)

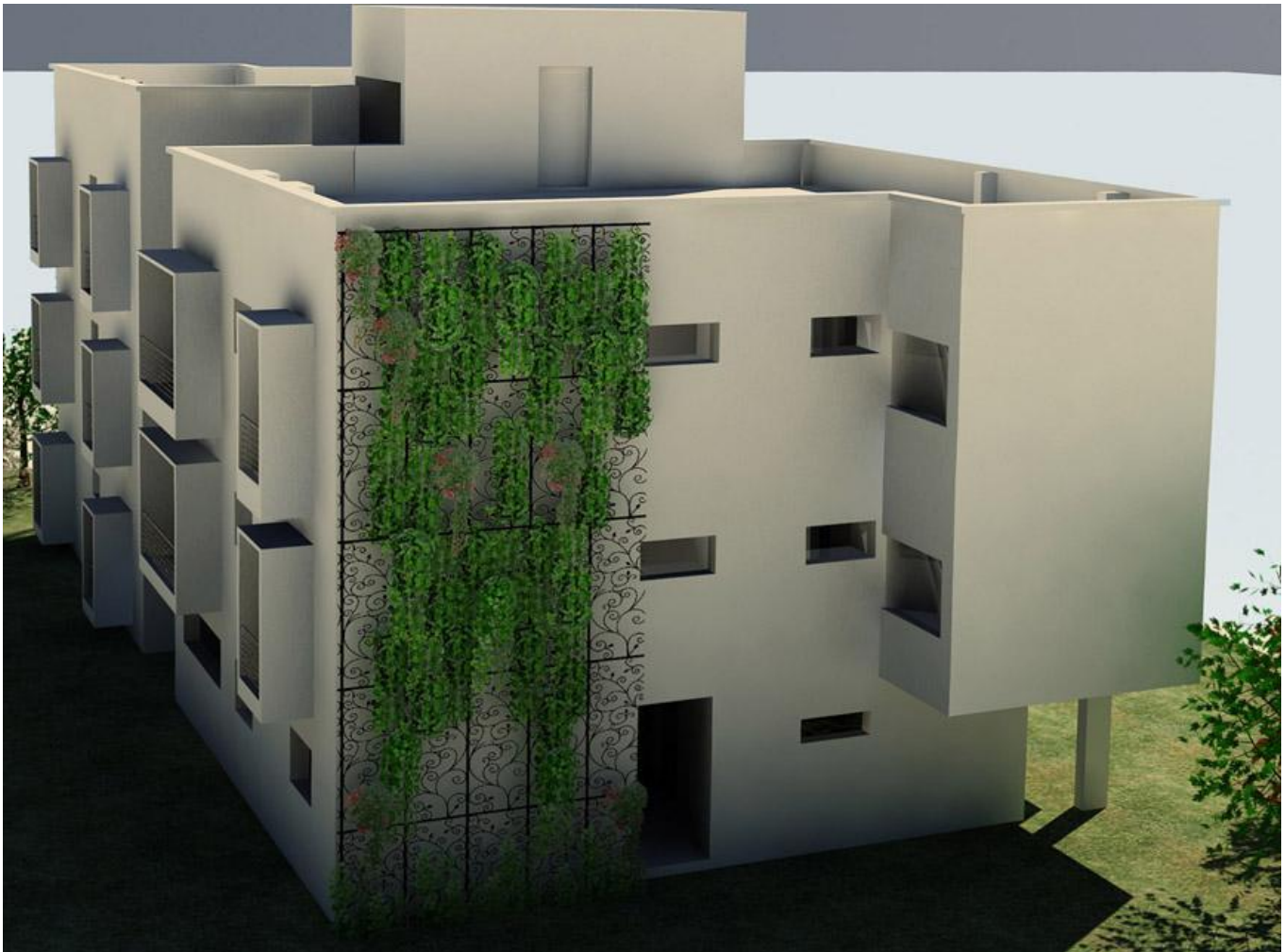
Wood works: Shakti (Kottakarai), Sundaram (Alankuppam)

Electrical: Gunaselvam (Alankuppam), Ramesh (Edayanchavadi), AVES (Auroville)

Plumbing & Sewage: Selvam (Alankuppam)

Site: Residential Zone, Sector 1





Perspective rendering

- Diversity is the base on which the apartments have been designed.
- There are a total of 6 units in the ground + 1 building. Each of these units differs in design and size offering wide possibilities to a wider range of people. No more is it necessary to fit an individual / couple or family in a prefixed, cookie cut design. The wider range of designs will speak to a larger cross section of people and we are confident that the acceptability of apartment living will eventually raise if the design approach flexible in this way.
- The levels of the apartments are staggered so as to offer more privacy.
- It is ideal to have a ground + 2 structure as this brings down overall costs of construction, offer more living space on a smaller footprint.



Arati III, Building 1: 95% completed

Arati III

Number of floors: Ground + 2

Type of Construction: RCC Frame

Type of walls: Fired bricks + hollow clay bricks with cement plastering

Special Features: North, East & West walls are cavity walls with vermiculite infill for heat insulation. Tar-sheets over intermediate slabs for sound isolation. Anutone sound panels at balcony openings for sound absorption. Specialized rubber padded clamps on all down pipes for sound isolation. CPVC, UPVC piping with copper threading for longer life.

Waste-Water System: Anaerobic treatment system with integrated vortex for aeration of treated water. Irrigation piping network for treated water usage in landscape.

Rain water harvesting: Passive rain water harvesting, redirecting of runoffs through swales into infiltration ponds.



Arati III, Building 2 under construction, estimated finishing time: May 2011

APARTMENT DATA				
		Plinth area of apartments incl balconies in sqm	Plinth area - common space = passages + staircase + garage in sqm	Total area
BUILDING 1				
	Type			
Apt 1	2-bedroom apt	132	21	153
Apt 2	1-bedroom apt	88	14	102
Apt 3	1-bedroom apt	95	15	110
Apt 4	2-bedroom apt	133	21	154
Apt 5	3-bedroom apt	167	30	197
Apt 6	2-bedroom apt	133	21	154
BUILDING 2				
Apt 1	2-bedroom apt	135	22	157
Apt 2	2 single bdrm apts combined to make one 3-bdrm apt	188	30	218
Apt 3		-	-	
Apt 4	2-bedroom apt	133	21	154
Apt 5	3-bedroom apt	165	26	191
Apt 6	2-bedroom apt	129	21	150
TOTAL COVERAGE OF PROJECT - INCL GARAGE, ELEC ROOM ETC				1740